

Complex Case Reviews with BioMatrix™ Family of Stents

David Martí Sánchez
Associate Professor of Cardiology
Madrid, Spain

The Dream of Any Interventionalist

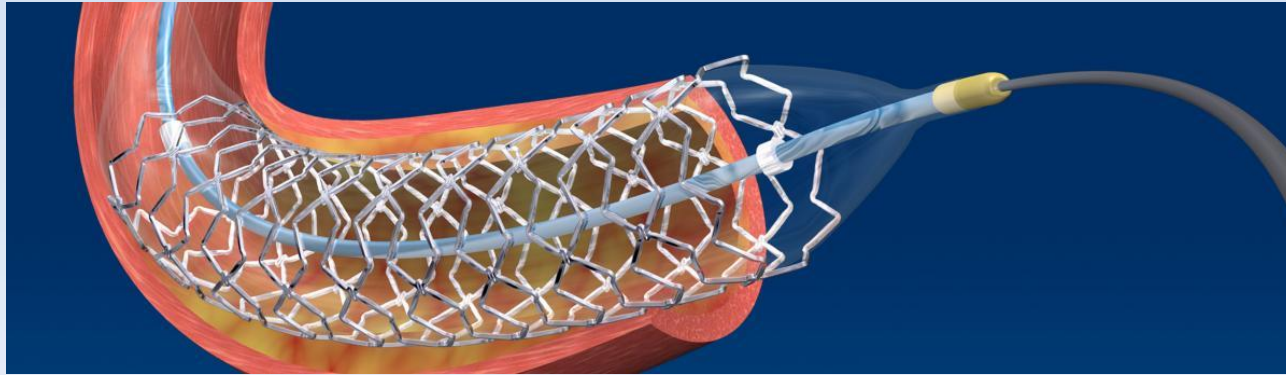
Low
Restenosis
Rate



Shortened
DAP
Therapy

BioMatrix™
Family

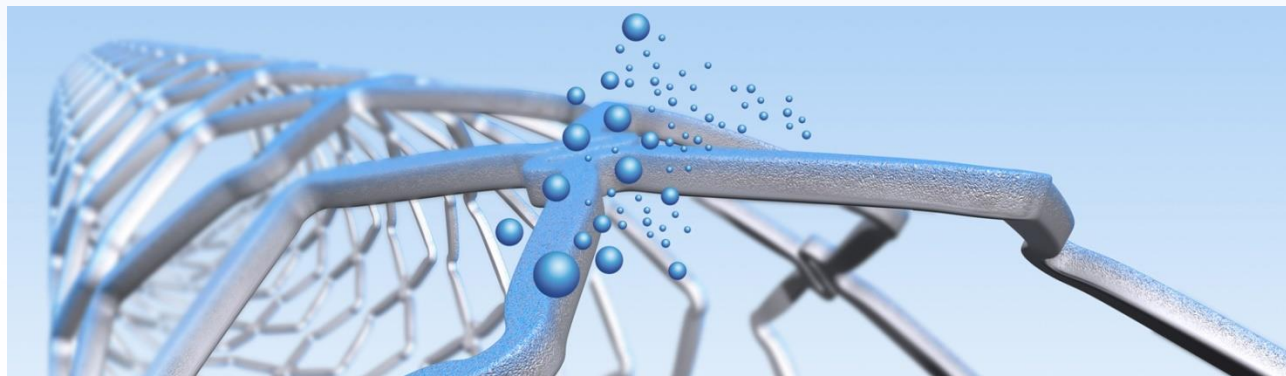
BioMatrix™ Family of Stents



**BIOMATRIX
NEOFLEX**



**BIOMATRIX
ALPHA**

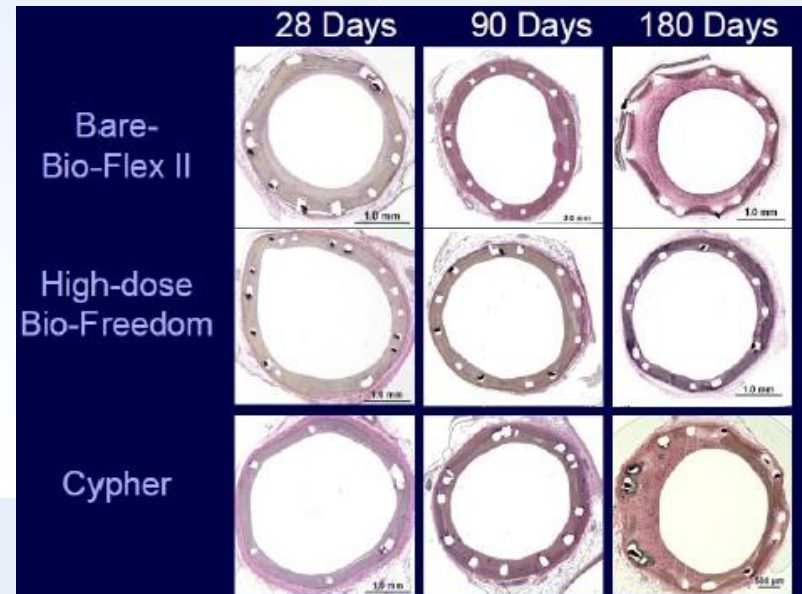
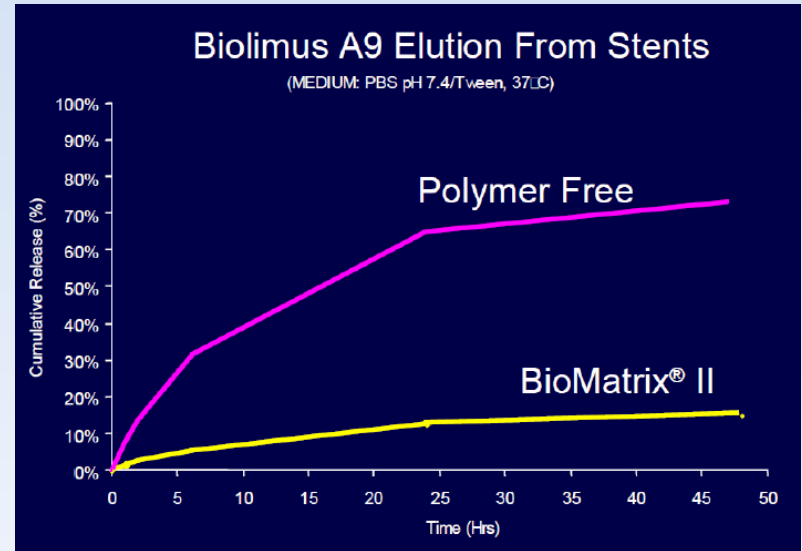
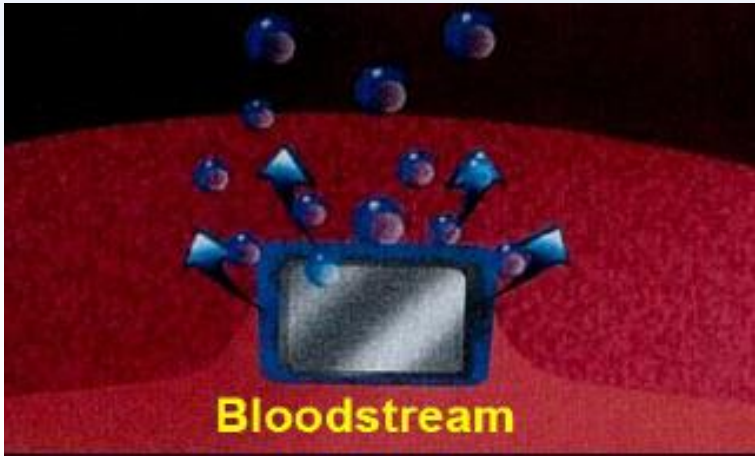
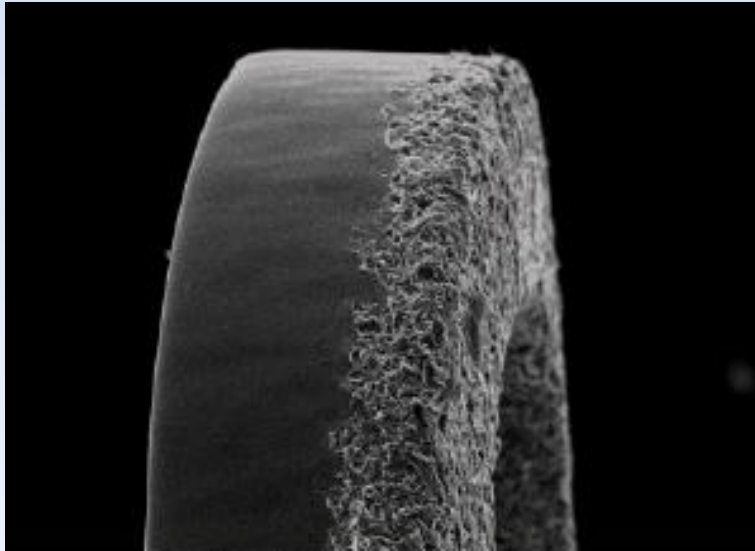


BIOFREEDOM

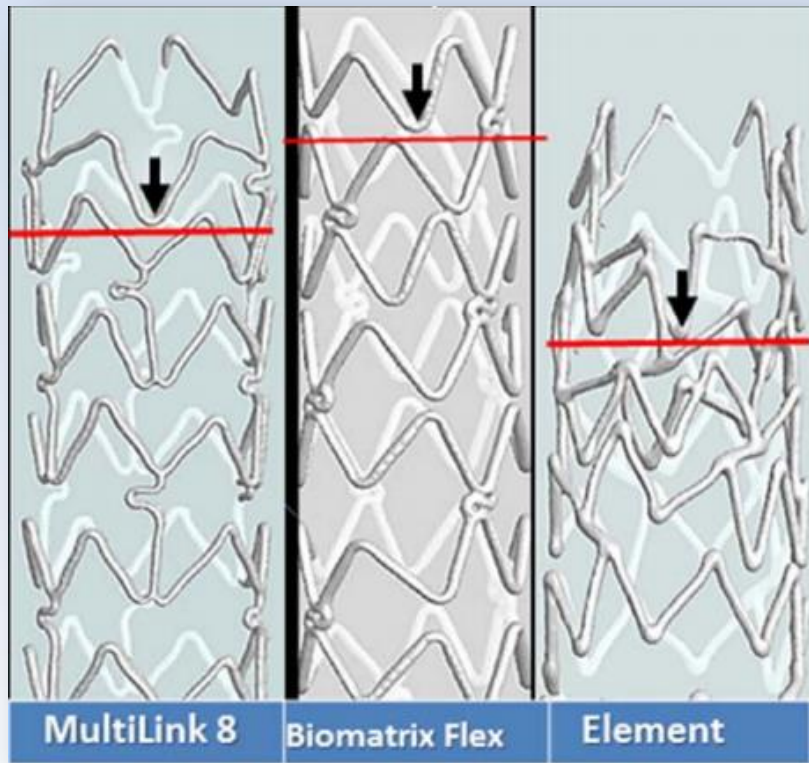
BioMatrix™ Family of Stents

	BIOMATRIX NEOFLEX	BIOMATRIX ALPHA	BIOFREEDOM
Platform	Juno	Chroma	Juno
Stent material	Stainless steel	Cobalt-Chromium	Stainless steel
Strut thickness	120µm	84–88 µm	120µm
Polymer material	PLA		N/A
Polymer type	Abluminal Biodegradable Polymer		Polymer- and carrier-free
Antiproliferative drug release	Biolimus (A9) (15.6µg/mm ²) Co-released with polylactic acid and completely desolves into CO ₂ +H ₂ O after a 6-9 months period.		Biolimus (A9) (15.6µg/mm ²) 98% released after 28 days

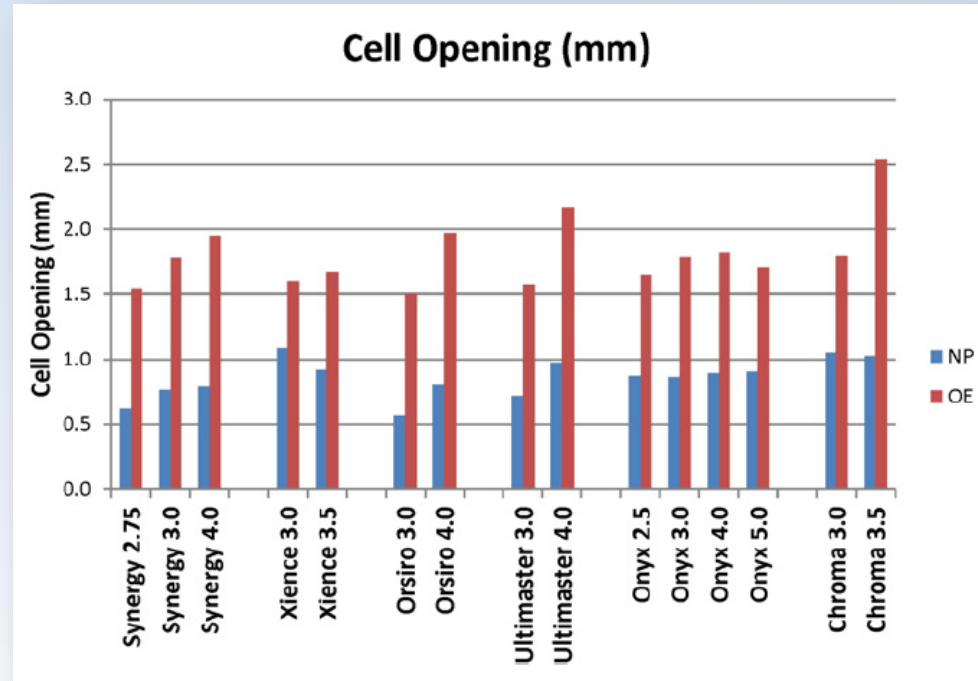
BioFreedom Stent



Other Attractive Features

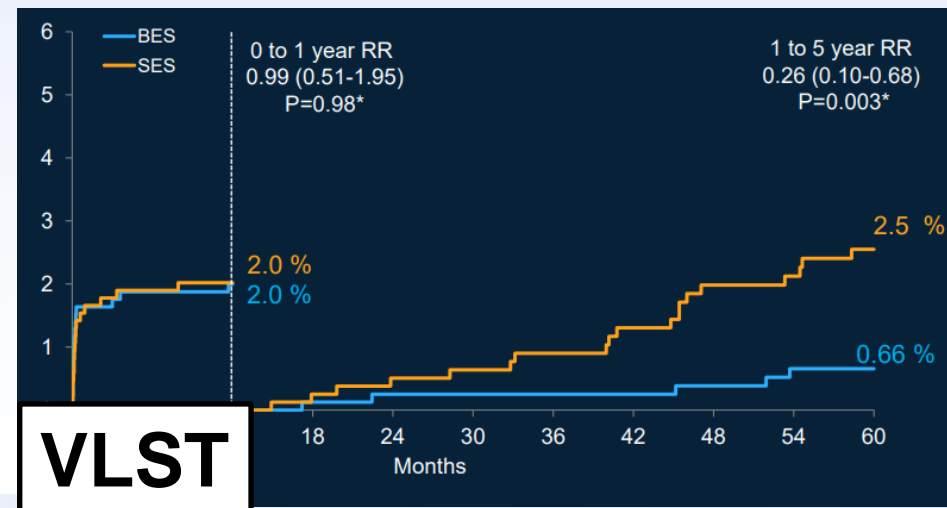
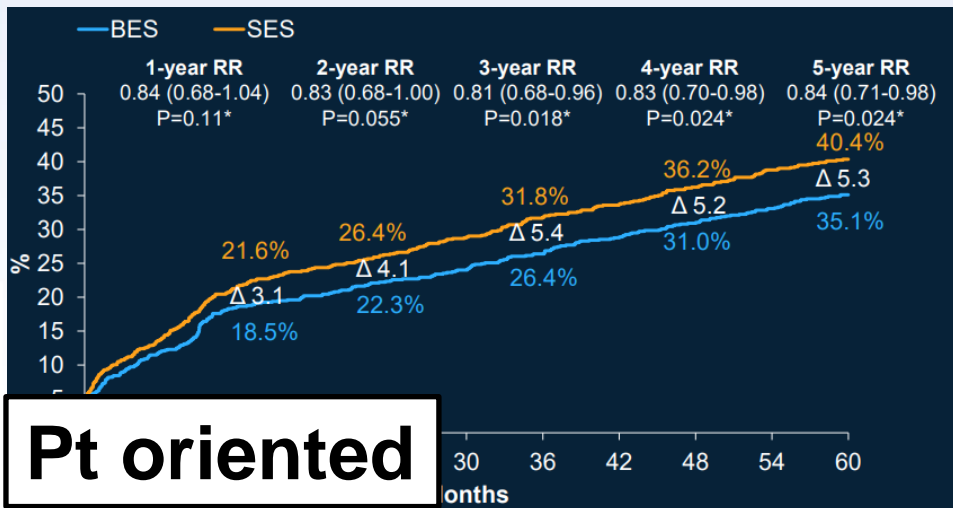
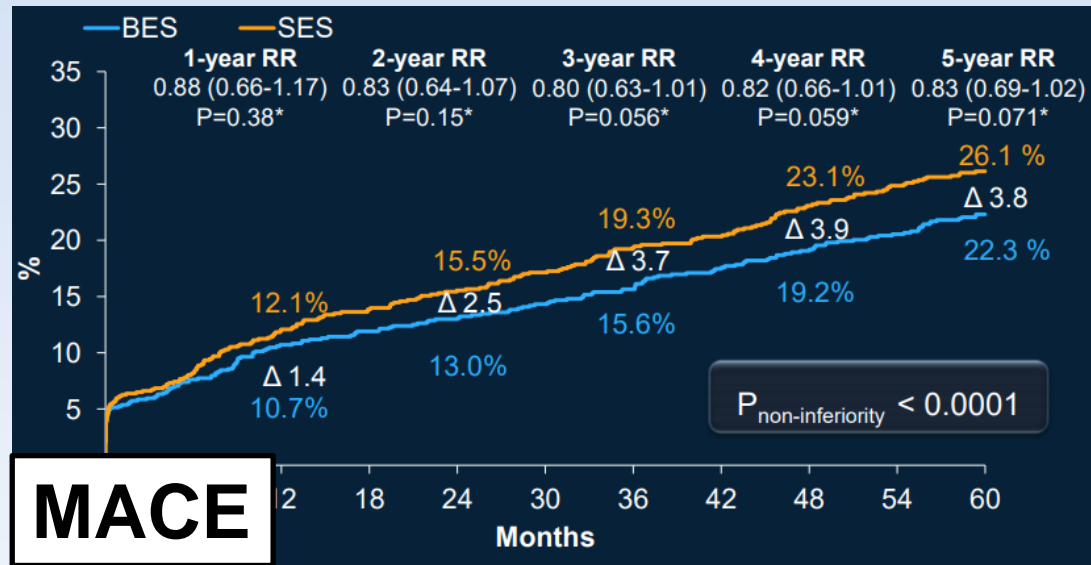


Ormiston J, et al. Circ Cardiovasc Interv
2014;62



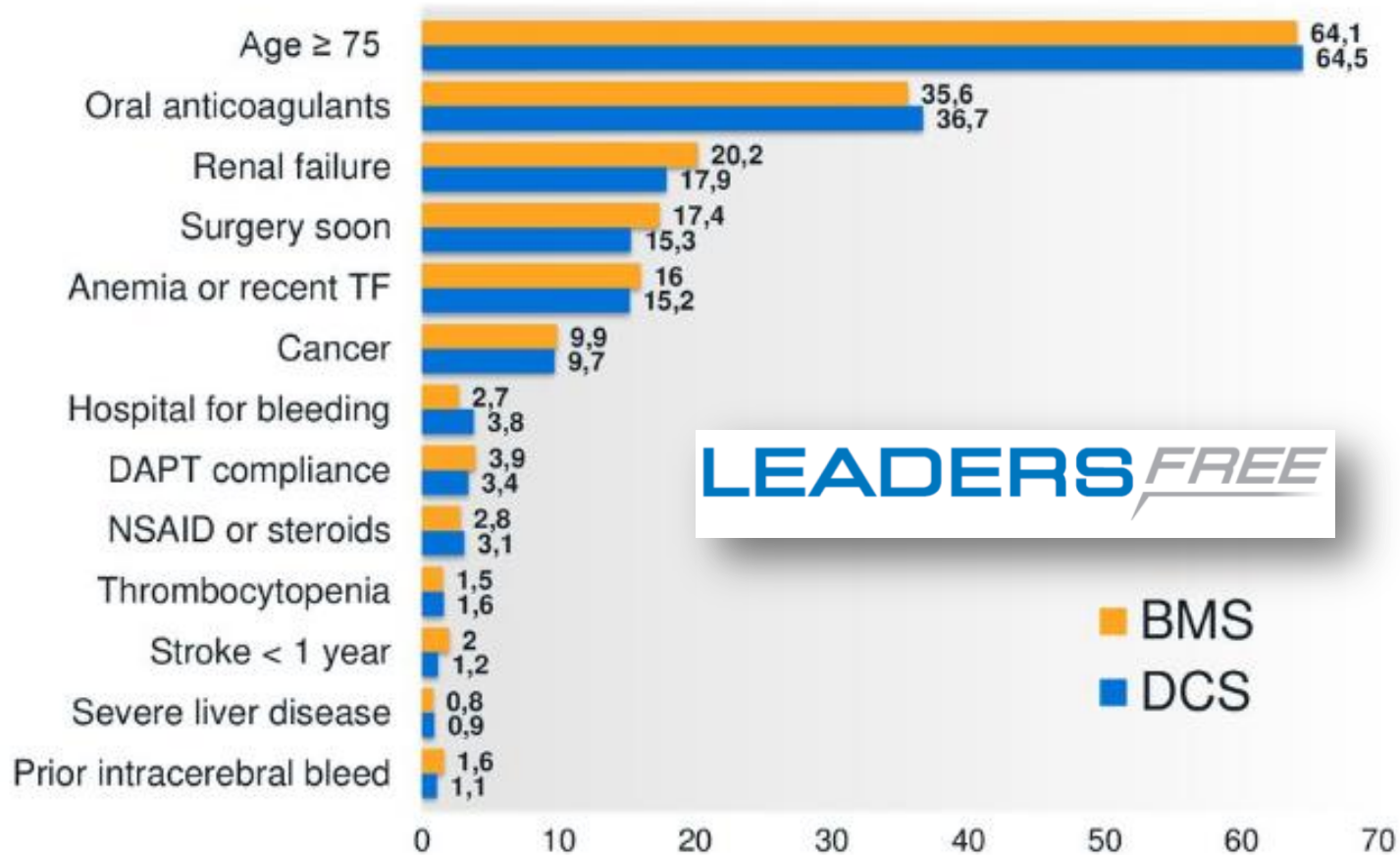
Ng J, et al. Int J Cardiol. 2016:171

LEADERS All Corners, 5-Year Results



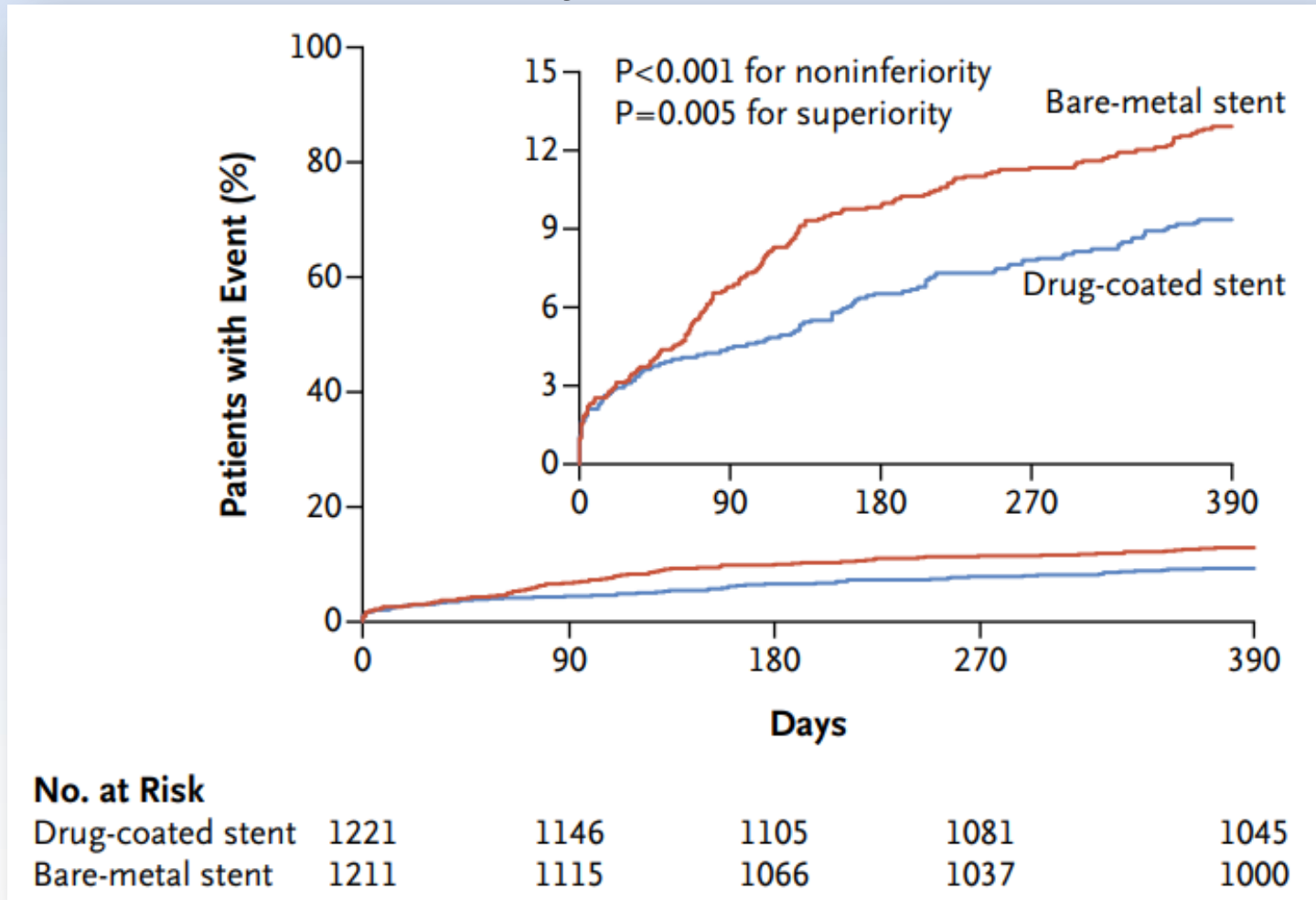
Polymer-free Drug-Coated Coronary Stents in Patients at High Bleeding Risk

Inclusion Criteria Applied (1.7 criteria / patient)



LEADERS FREE Trial

Cardiac death, myocardial infarction, or ST



**Polymer
free**

**Open
cell**

**Long &
Radial
Strength**



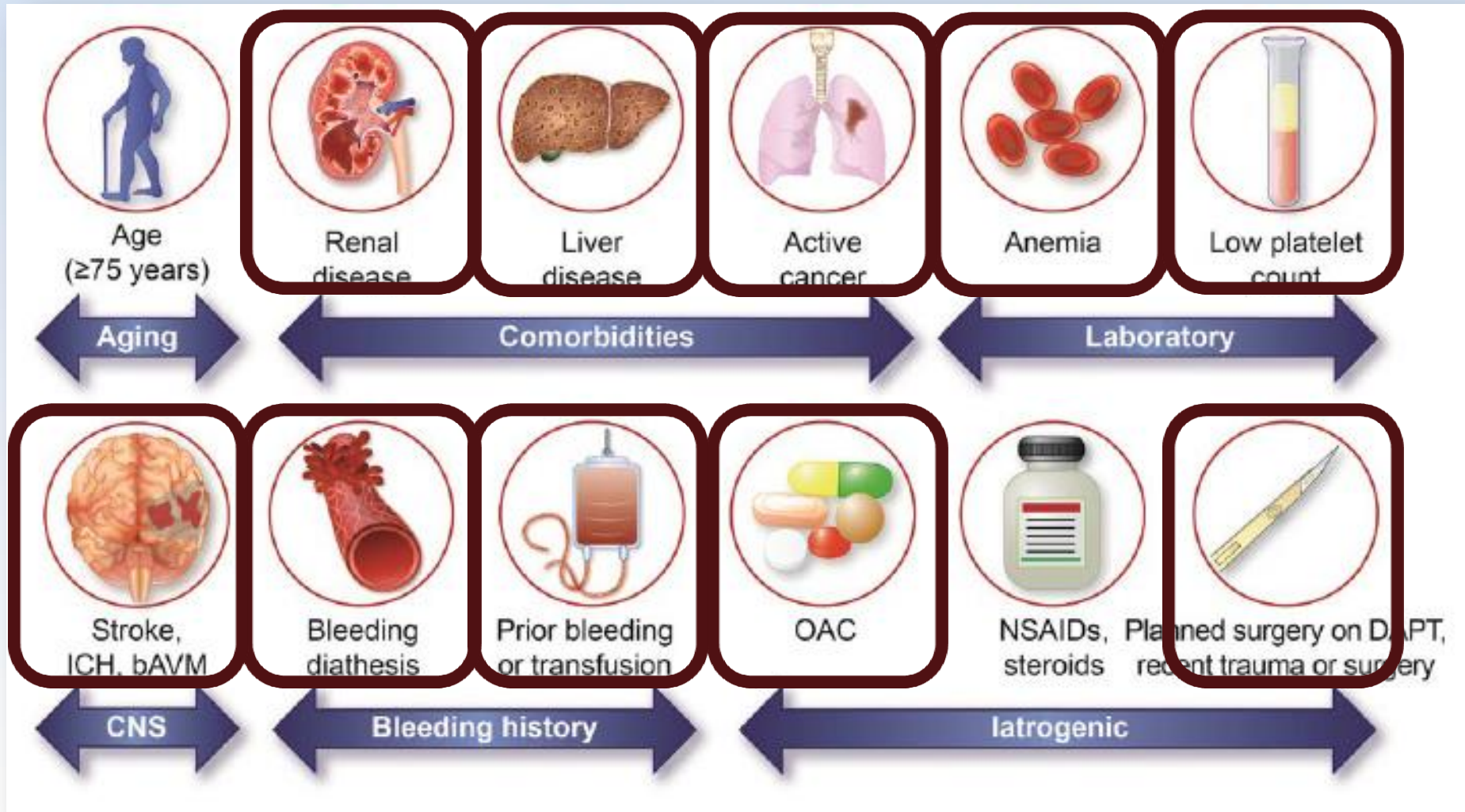
A Venn diagram consisting of three overlapping circles. The top circle is reddish-pink and contains the text 'HBR'. The bottom-left circle is yellow and contains the text 'BIF'. The bottom-right circle is grey and contains the text 'CA'. The circles overlap in the center and at the intersections between pairs of circles.

HBR

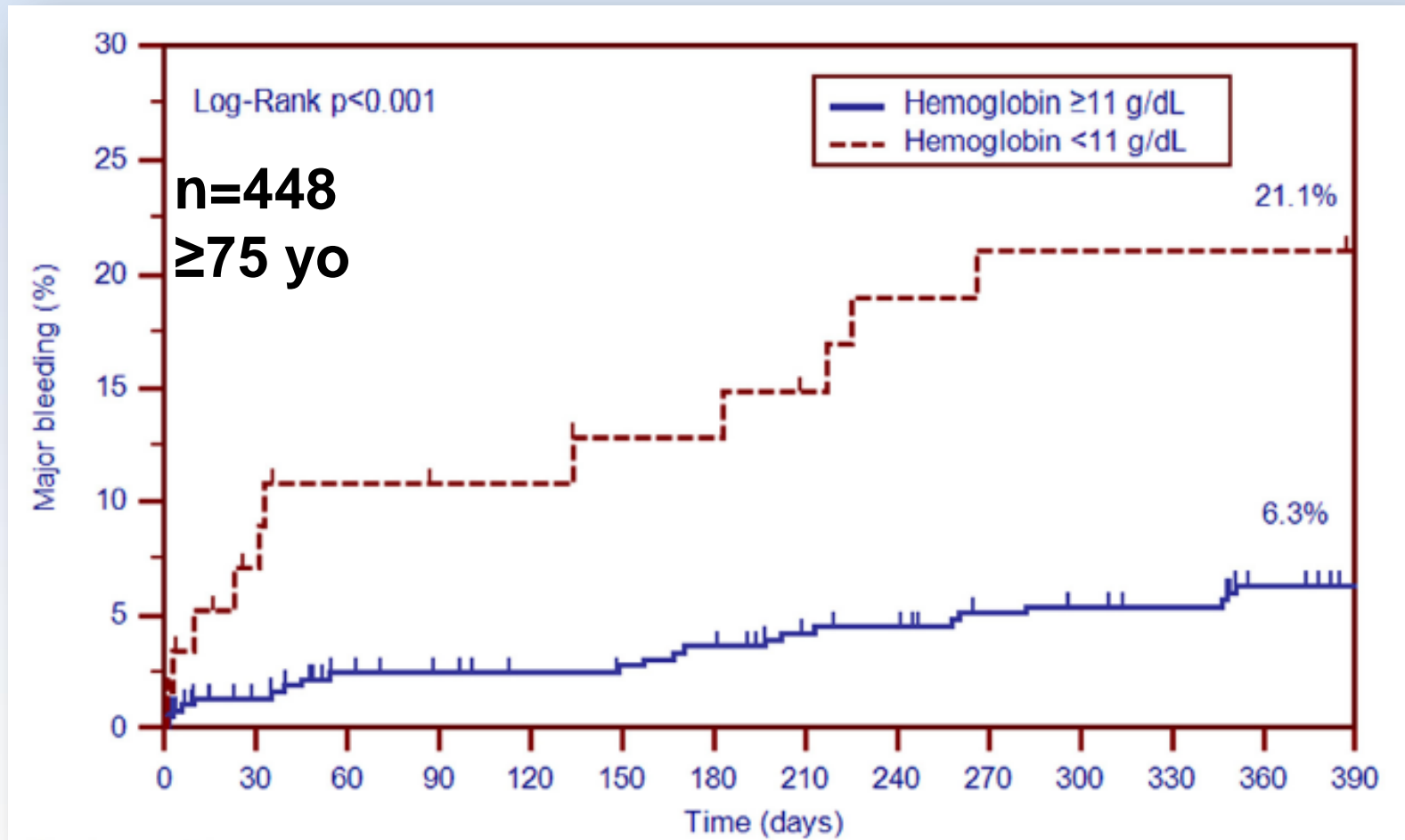
BIF

CA

Defining HBR Criteria



Impact of Anemia on the Risk of Bleeding in Older Adults Receiving PCI





A Venn diagram consisting of three overlapping circles. The top circle is reddish-pink and contains the text 'HBR'. The bottom-left circle is yellow and contains the text 'BIF'. The bottom-right circle is grey and contains the text 'CA'. The circles overlap in the center and at the intersections between pairs of circles.

HBR

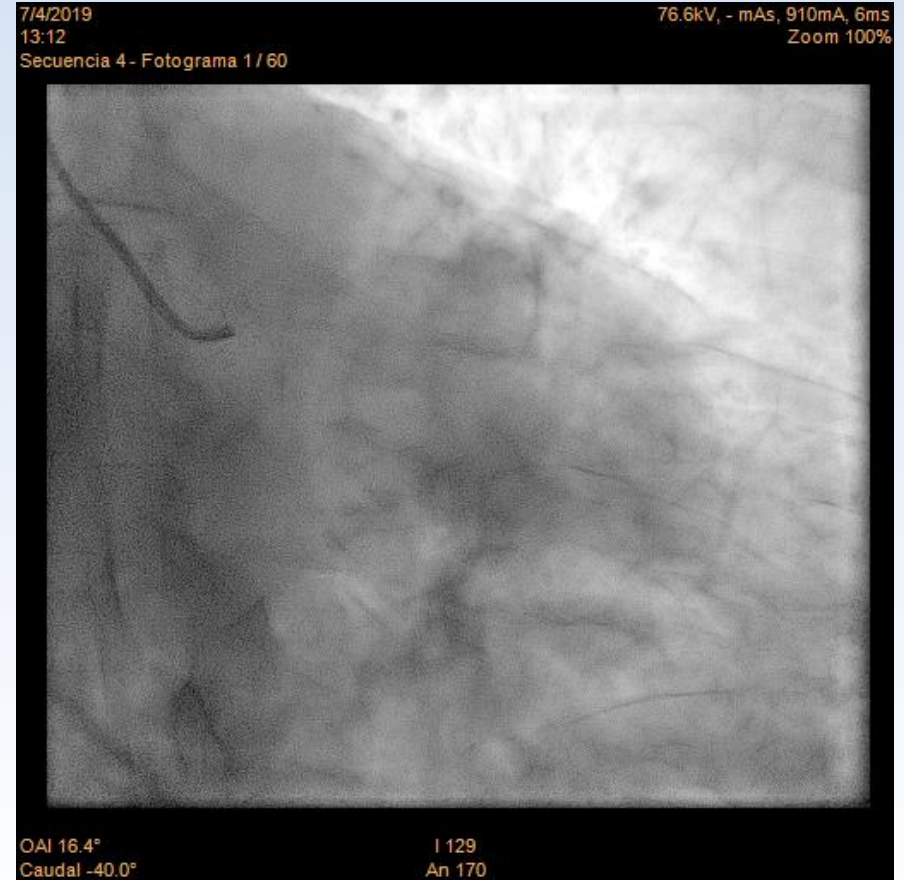
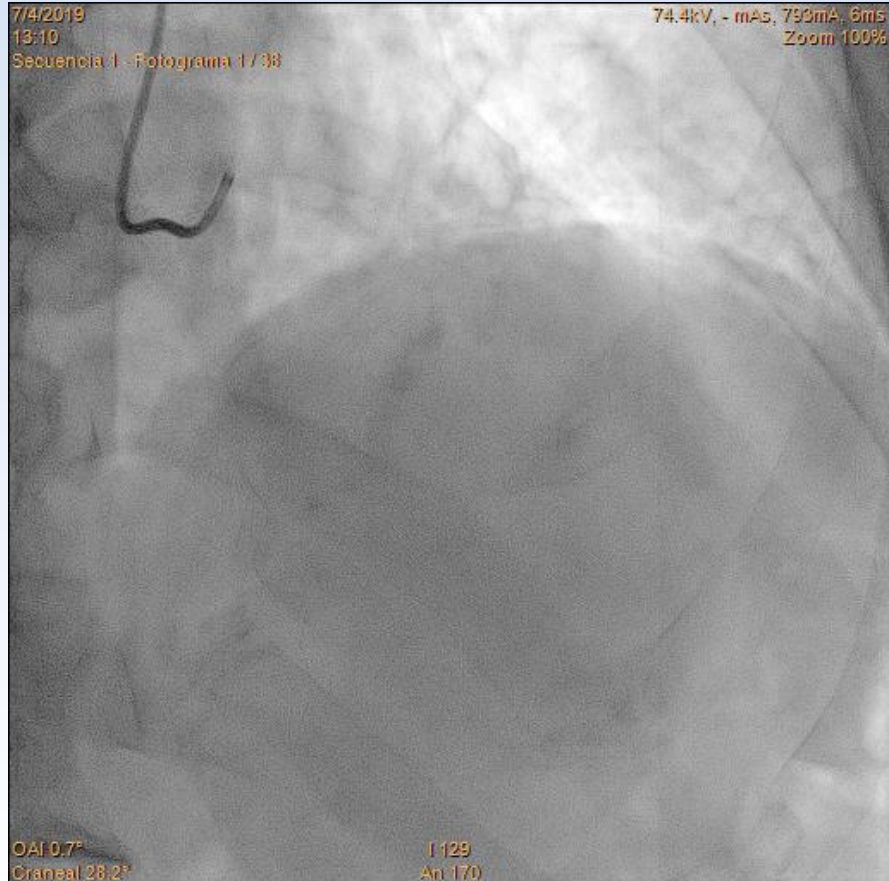
BIF

CA

Case Presentation

- 90 M
- Past MHx
 - T2DM
 - Mild cognitive impairment
- NSTEMI
- ECG: STD V4-V6
- HB 14.0, creat 0.78
- LVEF 54%
- Early invasive Rx
(MOSCA FRAIL RCT)

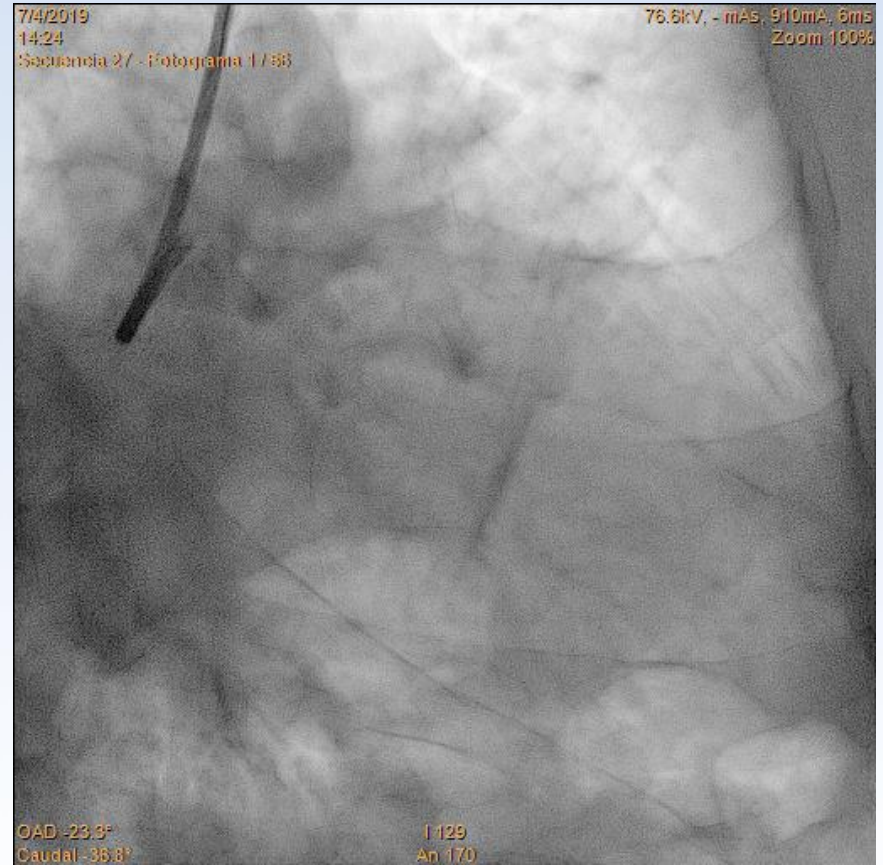
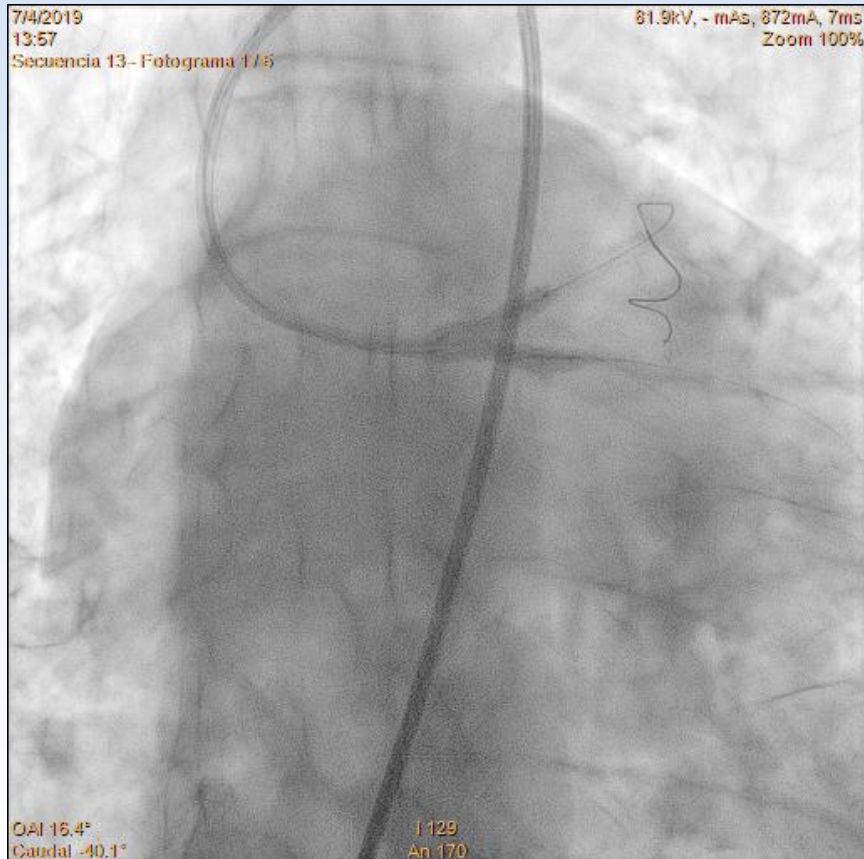
Diagnostic Angio



Technique

- ✓ Ad hoc LCA PCI, 2nd procedure RCA PCI
- ✓ Femoral crossover (8F GC)
- ✓ Lesion preparation 2.5 & 3.0 NC balloons
- ✓ Stenting:
 - ✓ LM-LAD: 3.5/14 BIOFREEDOM
 - ✓ LM-LCX: 3.5/18 BIOFREEDOM
 - ✓ Mid LAD: 3.0/18 BIOFREEDOM
 - ✓ Distal LAD: 2.5/11 BIOFREEDOM
 - ✓ MO: 2.5/8 BIOFREEDOM
- ✓ LM postdilation: 3.5 mm NC sequential FKBI

Final Result



Thank you!